

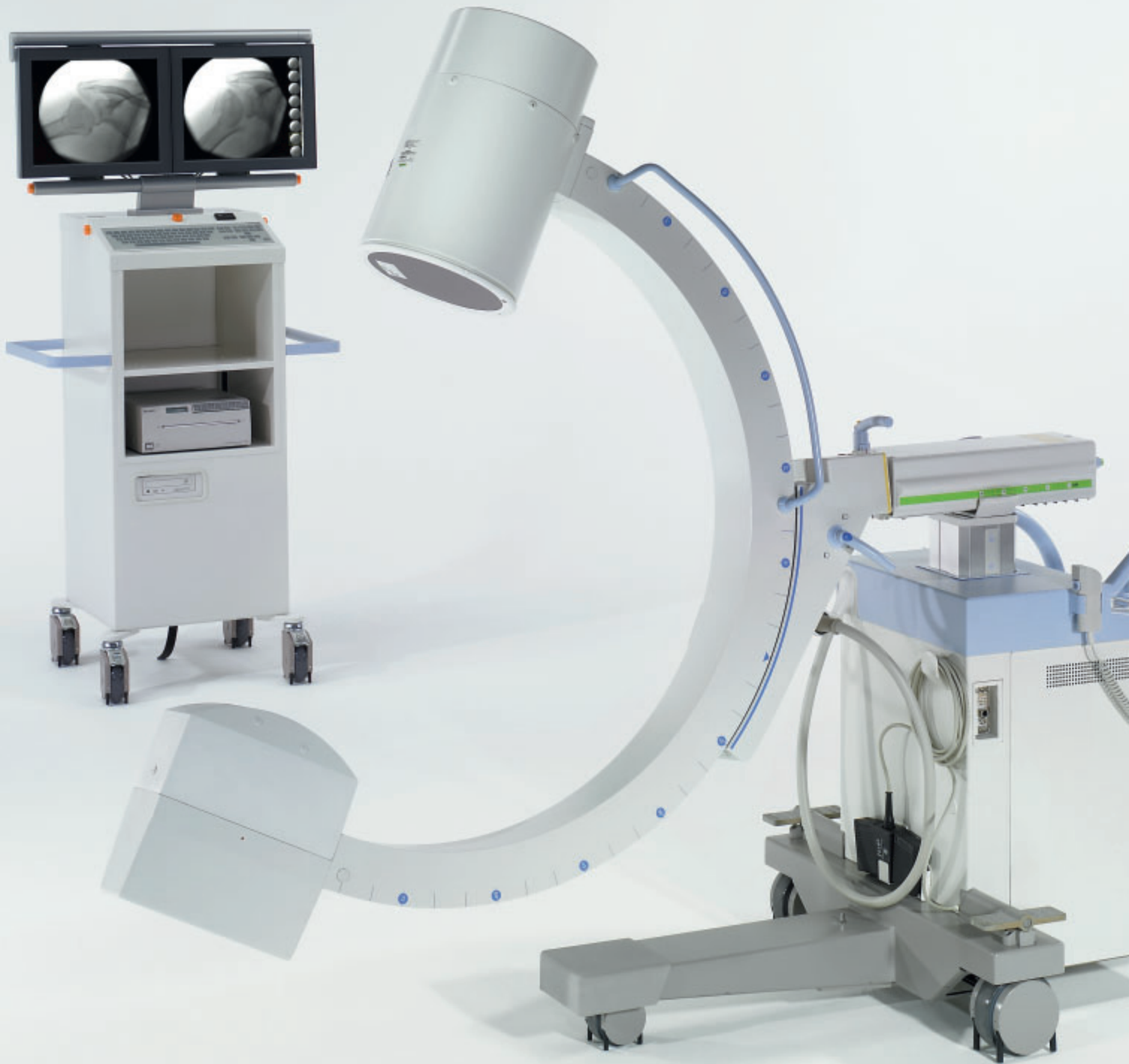


Compact versatility in mobile imaging

SIREMOBIL Compact L

www.siemens.com/medical

SIEMENS
medical



SIREMOBIL Compact L

Compact versatility in mobile imaging

Siemens' history of innovation continues with a superior version of its proven SIREMOBIL® Compact L, setting a new standard in efficiency and usability. SIREMOBIL Compact L easily meets the versatility requirements of advanced clinical workflow. Whether radiography, continuous fluoroscopy, or digital subtraction angiography, SIREMOBIL Compact L supports the entire spectrum of X-ray-based applications in the operating room.

SIREMOBIL Compact L stands for clinical versatility, excellent image quality with low dose, optimized workflow, and cost efficiency.

SIREMOBIL Compact L – compact and easy to handle, an outstanding mobile performance for everyday clinical workflow.

SIREMOBIL Compact L offers a newly developed user interface that meets the goals of optimized workflow and handling. Navigate easily through patient files, images, and clinical results. From the registration of patients to the documentation of images, you will be optimally supported by easy navigation through a set of simple user menus. The new software of SIREMOBIL Compact L follows current window-based PC standards. The result: easier work, accelerated workflow, and time savings.



SIREMOBIL Compact L

As simple as possible – for optimal clinical workflow

Simply follow your intuition – via the icon menu

The user-friendly menu is clearly set; the guidance is logical, transparent, and based on clinical demands. Simple entry screens, cursor control, and self-explanatory icon buttons (shortcuts) speed your way through menu navigation. The selection of system configurations, network functions, and application parameters is intuitive as well. The most important functions can be chosen with a single keystroke – workflow the way it should be.

Compact and 130° orbital movement

Compactness doesn't lead to limitations. SIREMOBIL Compact L features a large orbital rotation of 130°. This high projection flexibility is important for optimal clinical workflow, especially in orthopedics, traumatology, and pain management.

High performance, lower dose

SIREMOBIL Compact L is equipped with a high-performance X-ray generator to meet even the most demanding clinical applications. Challenging projections, like lateral views of the lumbar spine which require penetration of dense anatomy, are easily mastered.

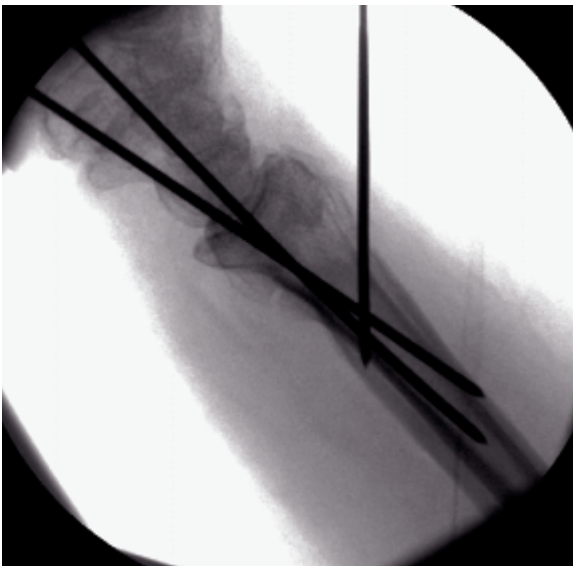
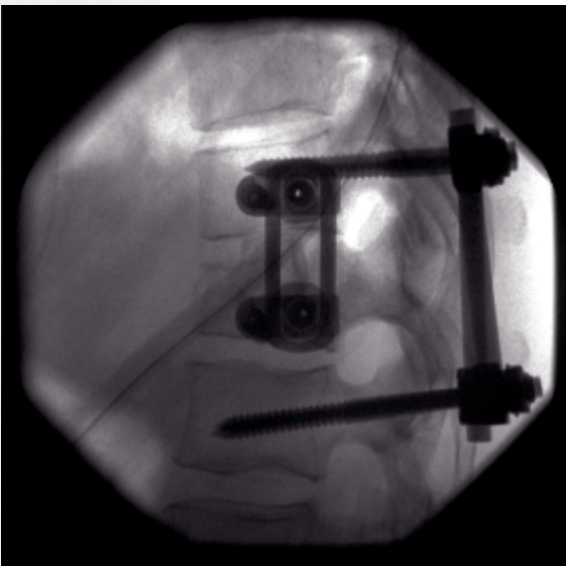
The uniquely designed X-ray tube provides extended fluoro times – over 50 minutes – with high image quality and the lowest possible dose. This is ideal for thoracic imaging applications, such as the placement of pacemakers, which require exceptionally long fluoro times.



SIREMOBIL Compact L has an orbital movement of 130° (0°, +90° and -40°). This large angular range enables high projection flexibility.







SIREMOBIL Compact L

CARE about dose savings

Maximum performance, minimum radiation – with CARE

SIREMOBIL Compact L supports the Siemens CARE (Combined Applications to Reduce Exposure) initiative, which features solutions to make imaging safer for clinicians and patients. The collimator locations can be displayed on LIH (Last Image Hold) – thus, for collimator adjustments, any further radiation can be avoided. The C-arm can be positioned with the help of the optional integrated laser light localizers.

Pulsed fluoroscopy

Pulsed fluoroscopy is standard on SIREMOBIL Compact L. Depending on the selected pulse width and pause interval, pulsed fluoroscopy can result in significant dose reduction – without compromising image quality.

DAP/air kerma value

An optional Diamentor* measures the DAP (Dose Area Product) of the fluoroscopy field. The DAP result is displayed on the live monitor for easy viewing and increased dose awareness. The DAP can also be documented on hardcopy images. Alternatively, the display and documentation of air kerma rate and cumulative air kerma value is possible.

* Standard in some countries

SIREMOBIL Compact L

Fast high-quality imaging

SIREMOBIL Compact L is equipped with a powerful imaging system that provides a very short boot-up time: in only 40 seconds the system is ready for imaging.

SIREMOBIL Compact L with its advanced imaging system stands for excellent image processing as well as large image memory. With MEMOSKOP CX 200, up to 200 images can be stored and the imaging system is upgradeable to 2,000 or 5,000 images.

For comfortable playback of image scenes, Auto Loop is a standard feature on continuous fluoroscopy, pulsed fluoroscopy, and subtraction at all MEMOSKOP CX systems.

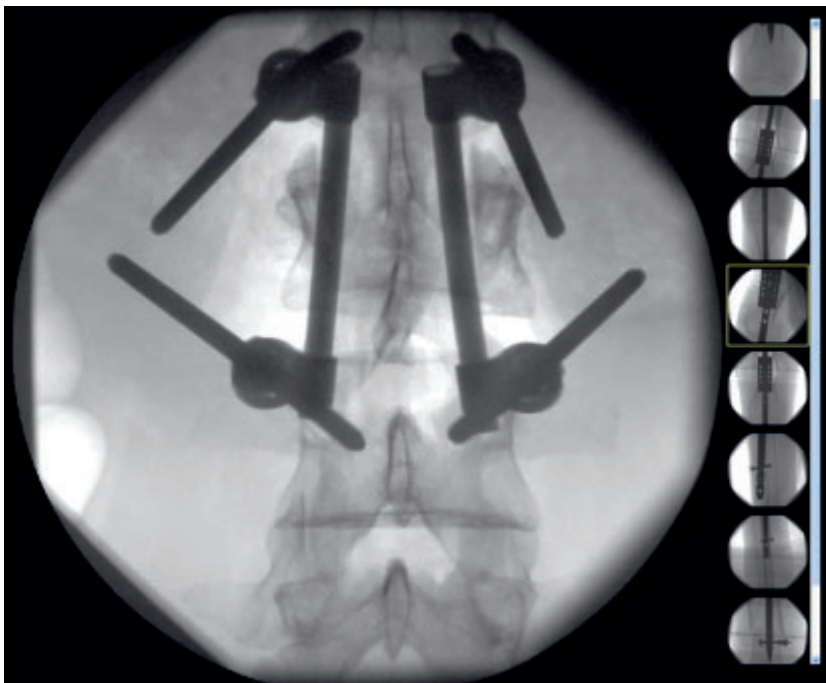
SIREMOBIL Compact L includes a CD drive. Optional CD-writing functionality helps you store your images or make them available for other viewing or imaging systems. In addition, export of images can be performed by using the USB port. Key DICOM functions (Digital Imaging and Communications) can be added to enable data transfer within a facility's network.

Like all our X-ray-based products, the individual components of the entire imaging chain are from one source – Siemens. These ideally matched components allow SIREMOBIL Compact L to consistently deliver brilliant image quality. SIREMOBIL Compact L is an all-digital imaging system for image processing, display, and storage in 1K.

Brilliant image quality on high-resolution TFT monitors

Images are displayed on two high-resolution TFT monitors that can be adjusted to the desired viewing angle. Their slim design allows for maximum mobility and exceptional maneuverability of the trolley. These TFT monitors provide excellent, flicker-free imaging and feature more than 170° viewing angle horizontally as well as vertically, high brightness and contrast.

While the left monitor shows the current live image in full size, the right monitor displays the reference image or thumbnails representing a preview of single images and/or pre-selected dynamic runs. This combined display allows fast image review.



Patient Data

Patient

Family

Patient ID

Sex

Birthdate
DD-MM-YYYY

Prefix

First

Middle

Suffix

Accession No.


Get Worklist



Procedure

Scheduled Date

Scheduled Time

Physician

Station AE Title

Procedure

Server Description

↑

← RETURN →

Enter

↓

SIREMOBIL Compact L

Focusing on ergonomics – a sophisticated design

SIREMOBIL Compact L combines the features you need in a powerful, user-friendly package. For example, the intuitive color coding of the brakes, angle markers, and chassis handles enable fast, precise, and especially ergonomic C-arm adjustment. The color coding of the brake handles corresponds to the markers indicating the C-arm's angular position. This facilitates positioning and communication in a busy OR environment.

The small footprint and light weight design of SIREMOBIL Compact L make the system easily transportable throughout the facility.

Clear, intuitive control panel. The user-friendly handling enables easy maneuverability.



Flicker-free, high-contrast TFT flat monitors with 170° visual angle – horizontally as well as vertically.



Light weight and ergonomic handles enable easy handling of the C-arm.



SIREMOBIL Compact L

Table of set-up

	SIREMOBIL Compact L MEMOSKOP CX 200	SIREMOBIL Compact L MEMOSKOP C-E/C-E 100
Storage capacity	200 images	3 images/100 images
Generator		
1.4 kW	•	•
7" I.I.	•	•
9" I.I.	◦	◦
TFT monitors		
15"	–	•
17"	–	◦
18"	◦	◦
19"	•	–
Storage and communication extension		
CX 2000, 2,000 images	◦	–
CX 5000 DSA, 5,000 images	◦	–
CD Reader	•	–
CD Writer	◦	–
USB port	•	–
DICOM Worklist, Send, Print	◦	–

• Standard feature ◦ Optional feature – Not available

CD drive to read external data or to locally save data (CD-RW optional).



User-friendly and safe brake handles due to ergonomic design and color coding.



On account of certain regional limitations of sales rights and service availability, we cannot guarantee that all products included in this brochure are available through the Siemens sales organization worldwide. Availability and packaging may vary by country and is subject to change without prior notice. Some/All of the features and products described herein may not be available in the United States.

The information in this document contains general descriptions of the technical options available and may not always apply in individual cases.

Siemens reserves the right to modify the design, packaging, specifications, and options described herein without prior notice. Please contact your local Siemens sales representative for the most current information.

Note: Any technical data contained in this document may vary within defined tolerances. Original images always lose a certain amount of detail when reproduced.

Please find fitting accessories:
www.siemens.com/medical-accessories

© 08.2007, Siemens AG
Order No. A91SC-20006-1C1-7600
Printed in Germany
CC XXXXX WS 0807X.

Contact Address in the USA

Siemens Medical Solutions USA, Inc.
51 Valley Stream Parkway
Malvern, PA 19355-1406 USA
Telephone: +1 888 826 9702

Contact Address in Japan

Siemens-Asahi
Medical Technologies Ltd.
Takanawa Park Tower
3-20-14, Higashi-gotanda
Shinagawa-ku
Tokyo 141-8644
Telephone: +81 3 5423 8510

Contact Address in Asia

Siemens Pte Ltd
The Siemens Center
60 MacPherson Road
Singapore 348615
Telephone: +65 6490 8182

Contact Address in Germany

Siemens AG, Medical Solutions
Special Systems Division
Allee am Röthelheimpark 2
D-91052 Erlangen
Telephone: +49 9131 84-0

Siemens AG
Wittelsbacherplatz 2
D-80333 Muenchen
Germany

Headquarters

Siemens AG, Medical Solutions
Henkestr. 127, D-91052 Erlangen
Germany
Telephone: +49 9131 84-0
www.siemens.com/medical