

GE Healthcare

# Cine & Vascular

OEC Fluorostar™  
7900 Digital Mobile C-Arm





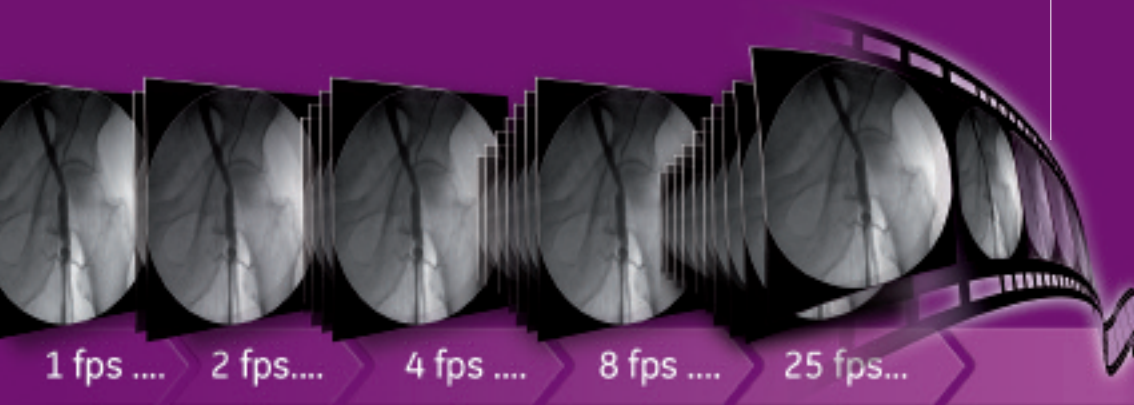
# Cine module

## See more than ever before

The Fluorostar Cine module provides acquisition frame rates for cineruns between 1 frame per second up to 25 frames per second for better General & Vascular procedures.

Easy to select for the procedure to be done thanks to the intuitive Touchscreen interface.


Thanks to its advanced post-processing capability, you can save up to 100 cineruns from the same acquisition.

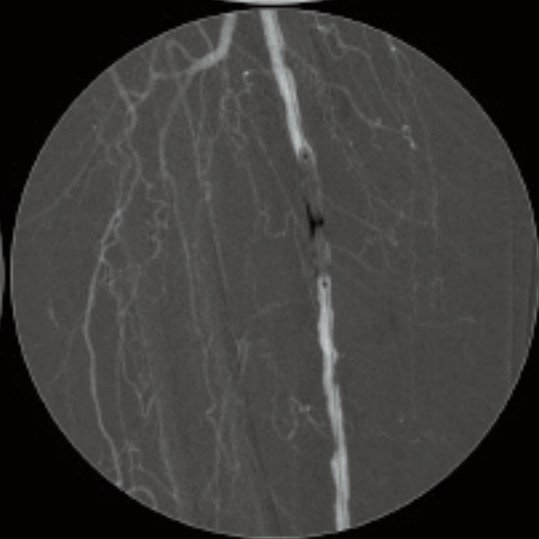


A large, white, C-arm X-ray machine is the central focus of the image. It has a large, curved arm that can rotate around a patient. The machine is mounted on a base with wheels. A monitor is visible on the right side of the machine, displaying a grayscale image of a vessel. The machine has a radiation warning symbol on the front of the C-arm.

# Fluorostar™ goes Vascular!

Designed to provide productivity  
& flexibility in OR, Fluorostar is now fully  
packed with Cine & Vascular options  
to extend your clinical capabilities.

A decorative graphic in purple and white is overlaid on the bottom half of the image. It consists of a network of interconnected nodes and lines, resembling a molecular structure or a data network. There are several silhouettes of people in various poses, some appearing to be in a clinical setting, integrated into the network. The graphic is semi-transparent and blends with the background.





# Vascular module

## Making the most of your C-Arm

The Fluorostar Vascular module supports Subtraction, Peak-opacification and Roadmapping functionality for peripheral vascular applications.

With the unique footswitch toggle mode, the surgeon has control and can easily switch between Fluoro, Cine, Subtraction and Roadmapping modes.

Advanced noise reduction features as up to 16 images averaging provides superb image quality in continuous and pulsed fluoro as well.





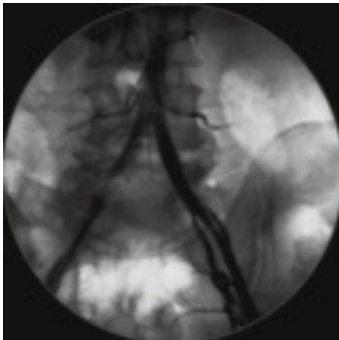
# Fast pulse mode

## Designed for productivity

It was never before so easy to save dose to patient and staff in the OR: just select on the Fluorostar for each profile the Fast pulse rate between 1 to 8 pulse per second.

The user can select the high level pulse mode, providing 1 pps to 8 pps at fixed 8.0 mA for high dense anatomy if needed.

Fluorostar true 1k x 1k image processing offers excellent image quality in all modes.



**Fast pulse mode**



**High level fast pulse mode**



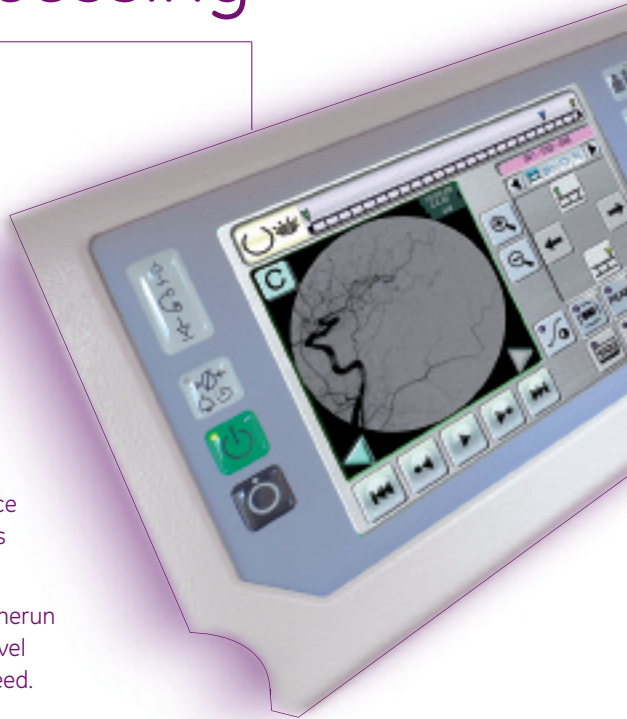
# Cine Postprocessing

## Enhanced postprocessing possibilities

The proven dual-side touchscreen interface gives the user all postprocessing functions on one level.

Using the simple touch-screen pad, the cinerun can be trimmed, adjusted on window & level and reviewed from slowmotion to fast speed.

The unique zoom and roam functions give you the focus on the interested area. Save the changes for future reviews with one button click.





# Cine & Vascular images and video gallery

GE Healthcare

## Cine & Vascular for Fluorostar

DEC Fluorostar  
7900 Digital  
Mobile C-Arm



GE imagination at work

© Copyright 2008 GE Healthcare - GE proprietary & confidential information



# A unique 4 configurations compact C-Arm Now enhanced

- Superb 1Kx1K image quality with the Cine & Vascular option available on Fluorostar 7900 Compact<sup>2</sup>, Series and Compact Plus configurations
- Brand new Color Coding for C-Arm positioning and handling



Data subject to change.  
Marketing Communications GE Medical Systems  
Société en Commandite Simple  
au capital de 52.854.900 Euros  
RCS Versailles B 315 013 359  
A General Electric Company,  
doing business as GE Healthcare

© Copyright GE Healthcare - 8500-BE

France  
Paris  
Fax: +33 (0) 1 30 70 94 35

Japan  
Tokyo  
Fax: + 81-3-3223-8524

Singapore  
Fax: +65-62917006

USA  
Milwaukee  
Fax: + 1-262-521-6123

GE Healthcare  
Chalfont St.Giles,  
Buckinghamshire,  
UK

[www.gehealthcare.com](http://www.gehealthcare.com)



GE imagination at work